

Sensor based energy conservation



CCTV

[Handwritten signature]

[Handwritten signature]

Le-Ment Tower, Mele Pattambi, Palakkad District, Pin - 679 306
Tel: 0466 2870041, Help Line No. 0466 2870040 4700 9446 998 009, Mob: 9895603041
E-mail: lementtower@gmail.com



IQAC CO ORDINATOR
LE-MENT COLLEGE OF ADVANCED STUDIES
LE-MENT CAMPUS, MELE PATTAMBI (P.O.)
PATTAMBI - 679306, P - 679306

Le-Ment Tower
Campus, Mele Pattambi
679 306, Ph: 0466 2870041

Sensor based energy conservation



Water sprinkler



Switch



UPS



MCB

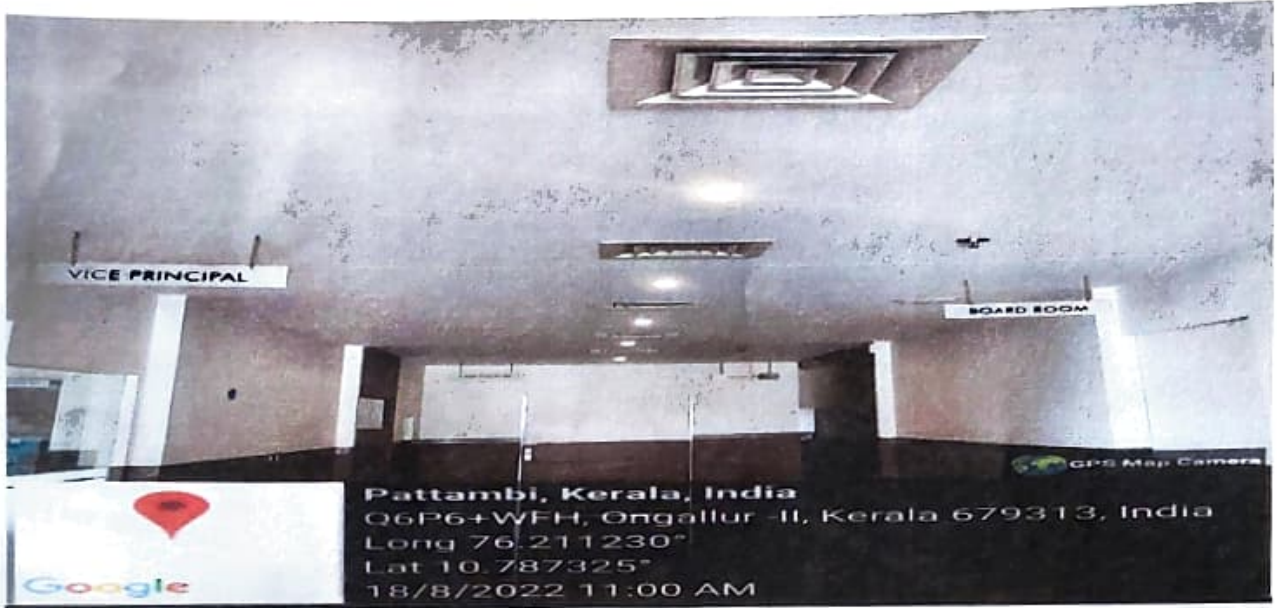
Handwritten signature
SHABEER, K. P.
Principal

Handwritten signature



Handwritten text and stamp
LE-MENT COLLEGE OF ADVANCED STUDIES
MELE PATTAMBI, PALAKKAD DISTRICT, KERALA - 679306
Ph: 695253041

Use of LED bulbs/ Power Efficient Equipment



Utilization of LED bulbs

Shabeer K.P.
Principal
College of Advanced Studies
Campus Mele Pattambi
679 306, Ph : 0466 2970041

Lement Tower, Mele Pattambi, Palakkad District, Pin - 679 306
Help Line No : 85 4700 4700, 9446 998 009, Mob : 9895603041
E-mail : lemention@gmail.com

Heidi yul
IQAC COORDINATOR
LE-MENT COLLEGE OF ADVANCED STUDIES
LE-MENT CAMPUS, MELE PATTAMBI (P.O.)
PATTAMBI - 679 306, PH: 0466 2970041



Powe efficient equipment



Google

Kerala, India

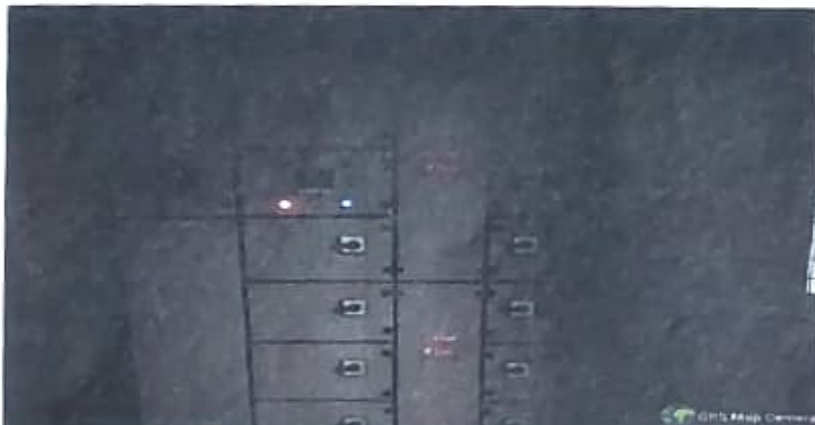
R52V+R2W, Pattambi, Kerala 679303, India

Long 76.192615°

Lat 10.802090°

16/11/2022 02:22 PM

Generator



Pattambi, Kerala, India

R52V+R2W, Pattambi, Kerala 679303, India

Long 76.192573°

Lat 10.802107°

16/11/2022 10:12 AM

MCB panel

SHABEER, K. P.
Principal

Lement Tower, Mele Pattambi, Palakkad District, Pin - 679 306
Principal 0466 2970041, Help Line No. 85 4700 4700, 9446 998 009, Mob. 9895603041
Lement Campus Mele Pattambi, Palakkad District, Pin - 679 306, Ph : 0466 2970041
E-mail: lemention@gmail.com

Nikhil
Principal

